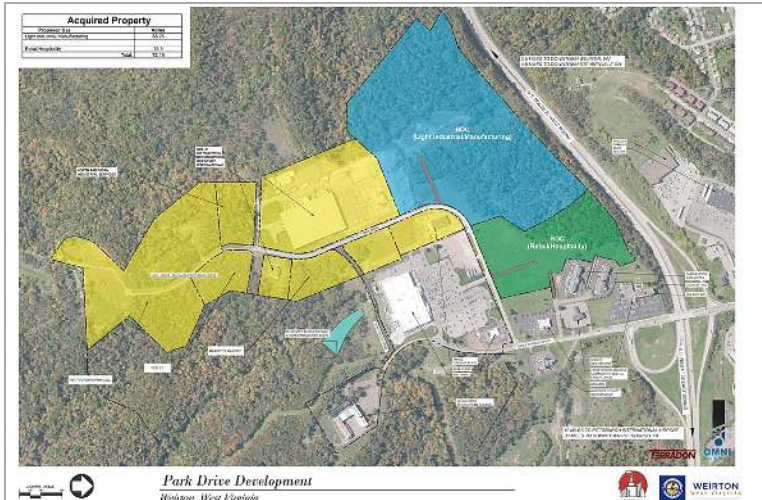


## Three Springs Business Park

Three Springs Drive, Weirton, West Virginia 26062 - Brooke County



### Property Details

**Type of space:** Industrial, Industrial/Business Park  
**Min Size:** 2 acres  
**Max Size:** 72.15 acres  
**Last Updated:** 10/5/2020

### Economic Development Contact

**Company:** West Virginia Development Office  
**Contact Name:** Matt Borrer  
**City:** Fairmont  
**State:** West Virginia  
**Cell:** 304-380-2413  
**Email:** [Matthew.K.Borrer@wv.gov](mailto:Matthew.K.Borrer@wv.gov)

### Property Contact

**Name:** Marvin Six  
**Company:** Business Development Corporation of the Northern Panhandle  
**Address:** 324A Penco Road  
**City:** Weirton  
**State:** WV  
**Zip:** 26062  
**Office Phone:** (304) 748-5041  
**Fax:** (304) 914-4687  
**Email:** [msix@bhbd.com](mailto:msix@bhbd.com)  
**Website:** <http://www.bhbd.com>

### Transportation

**Nearest Highway:** US Route 22

### Availability

**For Sale:** Yes  
**Sale Terms:** Negotiable  
**For Lease:** Yes  
**Lease Rate:** Negotiable  
**Lease Terms:** Negotiable  
**Date Property Available:** Immediately

### Site Details

**Located in City Limits:** Yes  
**Zoning:** PDD  
**Total Acres:** 124.26  
**Available Acres for Development in Industrial/Business Park:** 72.15  
**Maximum Contiguous Available Acres for Development in Industrial/Business Park:** 72.15 acres  
**Divisible:** Yes

### Utilities

**Electric Service Provider:** Mon Power  
**Voltage:** 12 kV  
**Natural Gas Service Provider:** Mountaineer Gas Company  
**Natural Gas Line Size:** 2 in & 8 in  
**Available Natural Gas Pressure:** 190 psi (8")  
**Water Service Provider:** City of Weirton  
**Water Line Size:** 8 in  
**Static Water Pressure:** 80 psi  
**Sewer Service Provider:** City of Weirton  
**Excess Sewer Capacity:** Weirton  
**Cable Available in the Area:** Yes

**Distance to Major Highway:** 0.2 miles

**Nearest Interstate:** I-79

**Distance to Interstate:** 25 miles

**Interstate Exit:** 64A

**Nearest Commercial Airport:** Pittsburgh International Airport

**Distance to Airport:** 25 miles

**DSL Available in the Area:** Yes

## Environmental Studies

**Located outside of the 100 Year Floodplain:** Yes

## Other

**Development Council Region:** 11

## Documents

[Three Springs Business Park PARCEL MASTER PLAN 01.17.2018 FINAL.jpg](#)