

## Beech Bottom Industrial Park

WV Route 2, Beech Bottom, West Virginia 26030 - Brooke County



### Property Details

**Type of space:** Industrial, Industrial/Business Park  
**Min Size:** 6 acres  
**Max Size:** 102 acres  
**Last Updated:** 10/5/2020

### Economic Development Contact

**Company:** West Virginia Development Office  
**Contact Name:** Matt Borrer  
**City:** Fairmont  
**State:** West Virginia  
**Cell:** 304-380-2413  
**Email:** [Matthew.K.Borrer@wv.gov](mailto:Matthew.K.Borrer@wv.gov)

### Property Contact

**Name:** Marvin Six  
**Company:** Business Development Corporation of the Northern Panhandle  
**Address:** 324A Penco Road  
**City:** Weirton  
**State:** WV  
**Zip:** 26062  
**Office Phone:** (304) 748-5041  
**Fax:** (304) 914-4687  
**Email:** [msix@bhbd.com](mailto:msix@bhbd.com)  
**Website:** <http://www.bhbd.com>

### Transportation

**Nearest Interstate:** I-70

### Availability

**For Sale:** Yes  
**Sale Terms:** Negotiable  
**For Lease:** Yes  
**Lease Terms:** Negotiable  
**Date Property Available:** Immediately  
**Date Listed:** 1/18/2013

### Site Details

**Located in City Limits:** Yes  
**Zoning:** None  
**Total Acres:** 616  
**Available Acres for Development in Industrial/Business Park:** 102  
**Maximum Contiguous Available Acres for Development in Industrial/Business Park:** 79 acres  
**Divisible:** Yes  
**Divisible Acreage Range:** 6, 7, 10 & 79 Acres  
**Tax District:** Beech Bottom Corp (1)  
**Tax Map and Parcel Numbers:** Map B36B, Parcels 116, 117, 119, 126; Map B36F, Parcel 77; Map B36K, Parcel 13; Map BB36, Parcels 1, 23, 23.1, 24

### Utilities

**Electric Service Provider:** Mon Power  
**Voltage:** 480  
**Natural Gas Service Provider:** Mountaineer Gas Company  
**Water Service Provider:** Three wells on site with tank  
**Excess Sewer Capacity:** Tiltonsville  
**DSL Available in the Area:** Yes

**Distance to Interstate:** 11 miles  
**Interstate Exit:** 1  
**Nearest Commercial Airport:** Pittsburgh International Airport  
**Distance to Airport:** 36.5 miles  
**Access to Navigable Waterway:** Yes  
**Navigable Waterway:** Ohio River  
**Nearest Inland Port:** None

**Environmental Studies**

**Located in 100 year floodplain:** Yes  
**Flood Hazard Comments:** 70 Acres located in Zone AE

**Other**

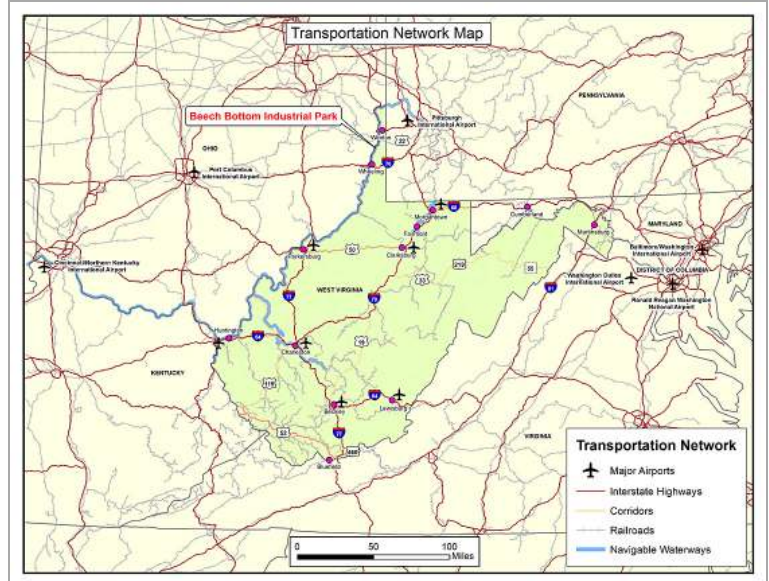
**Development Council Region:** 11

**Documents**

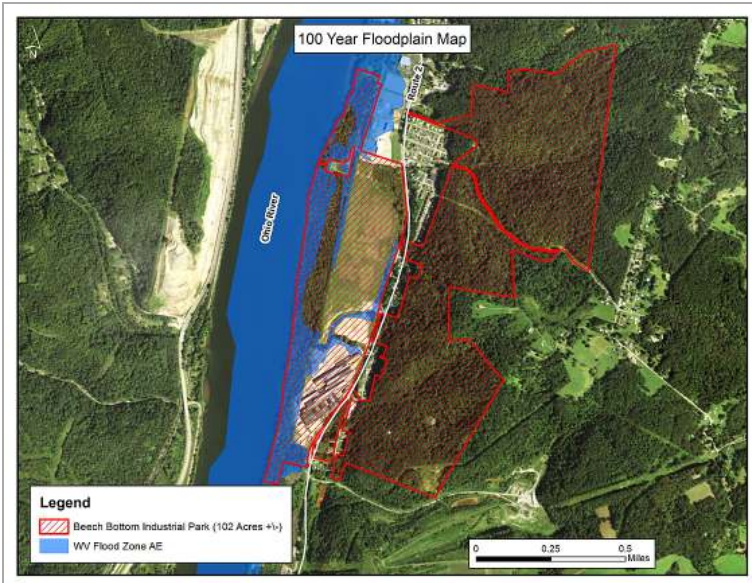
- [Wetlands Map Classifications.pdf](#)
- [WetlandsDeepwaterHabitatsClassificationCode.pdf](#)
- [Beech Bottom Industrial Park Plant Plat- 05-08-13.pdf](#)



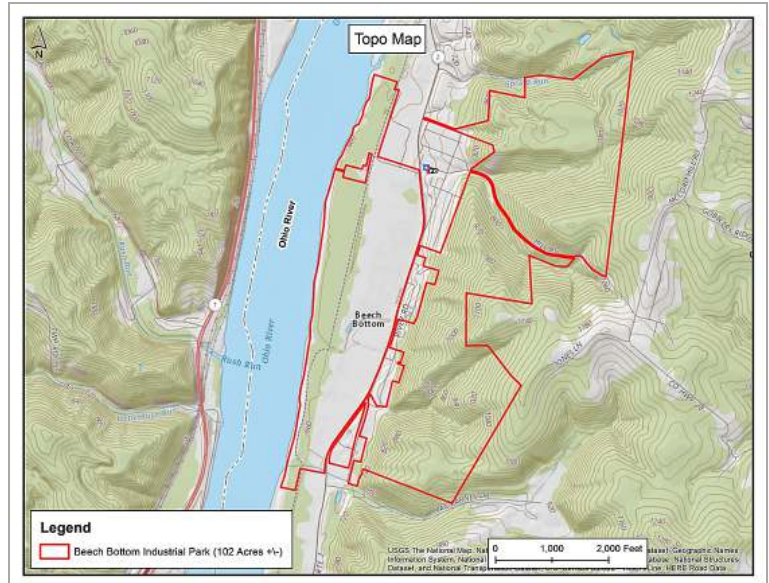
Beech Bottom Industrial Park Aerial Map.jpg



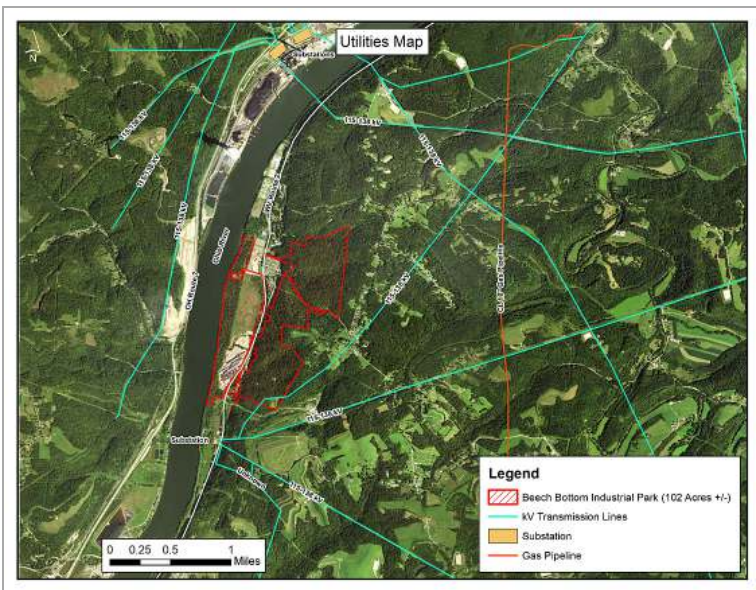
Beech Bottom Industrial Park Transportation Network Map.jpg



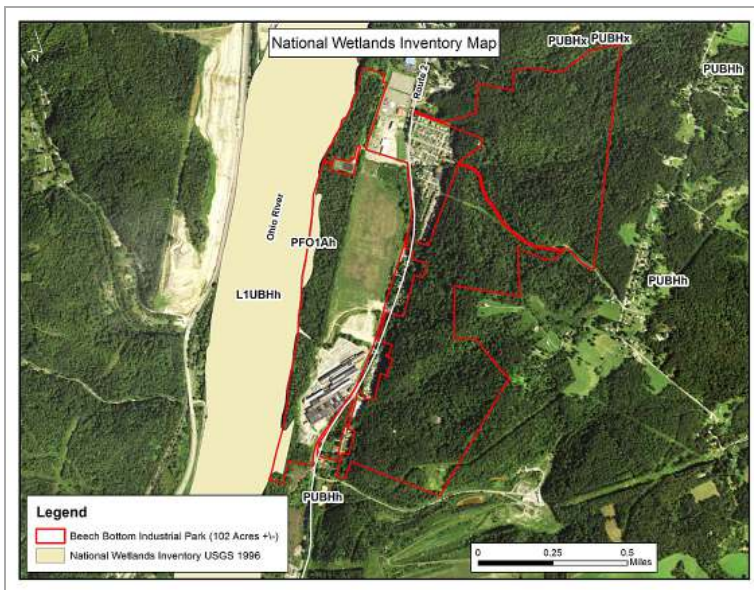
Beech Bottom Industrial Park Floodplain Map.jpg



Beech Bottom Industrial Park Topo Map.jpg



Beech Bottom Industrial Park Utilities Map.jpg



Beech Bottom Industrial Park Wetlands Map.jpg